


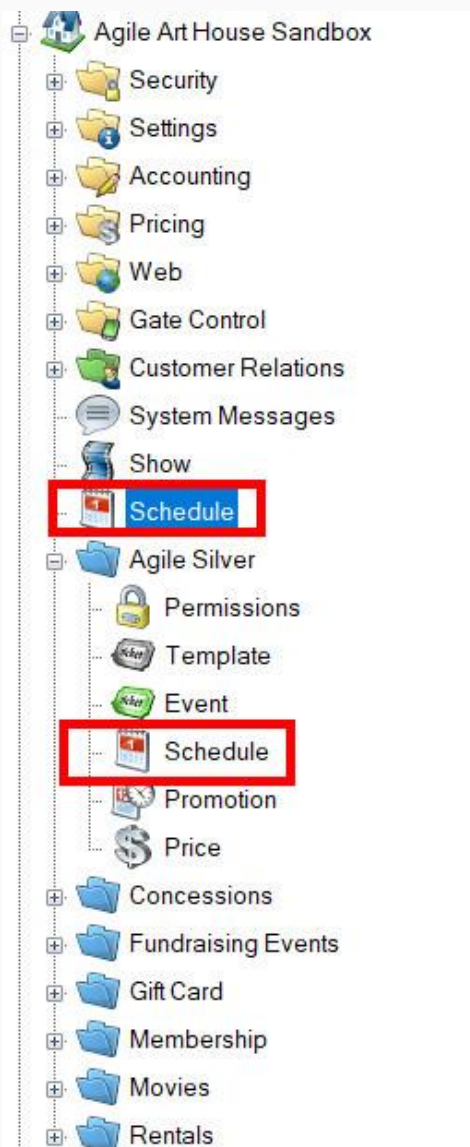
Using the Schedule View

You may add showing times to any show by simply dragging that show onto our schedule view. This schedule view also makes it easy for you to edit your showing times.

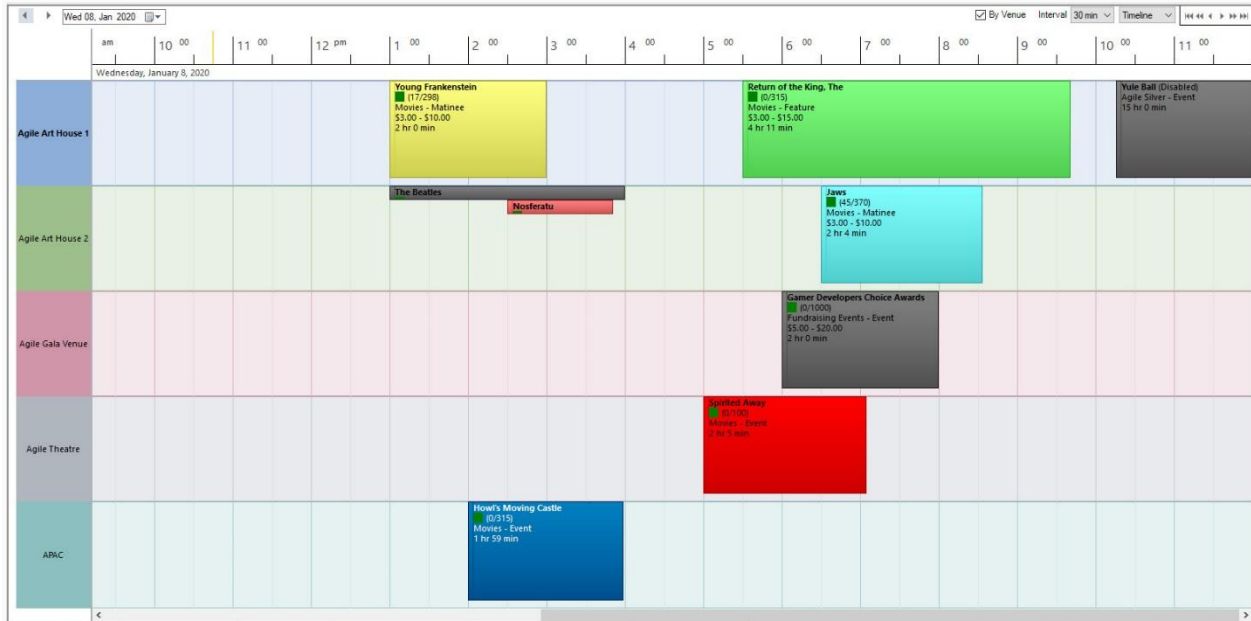
1. Log into **Administration**.

2. Click the **House** Icon (Corporate Organization). 

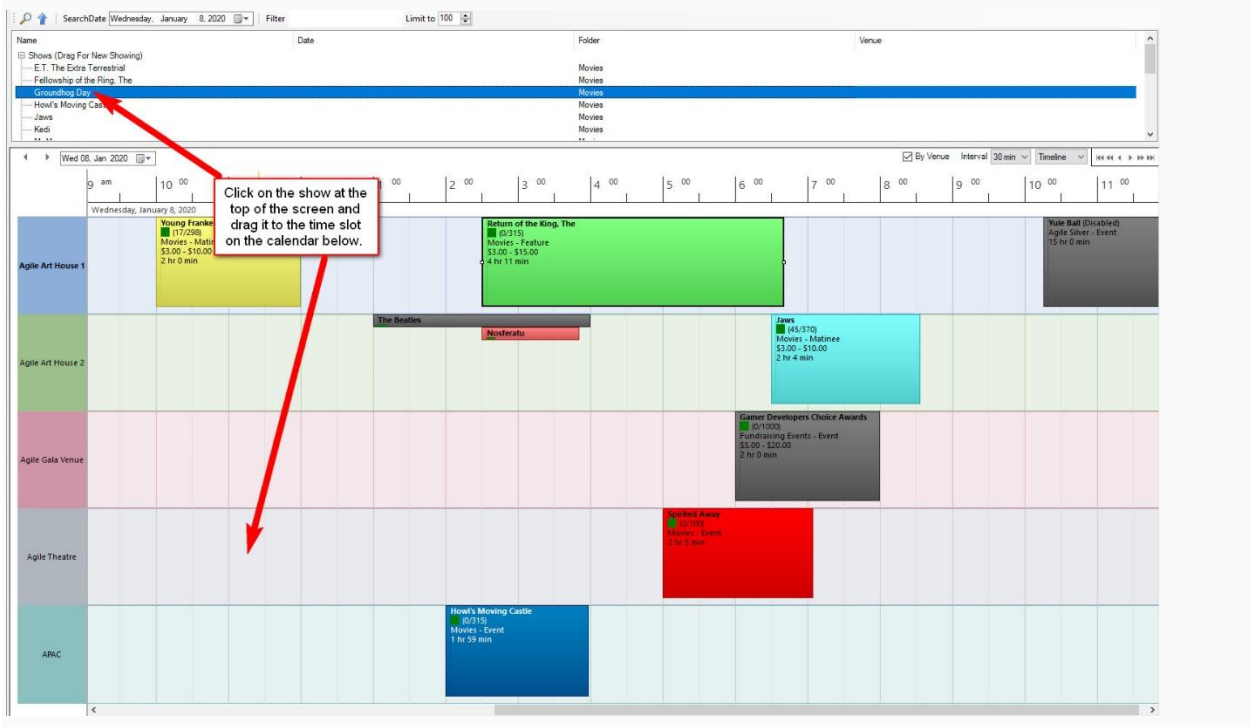
3. There are two relevant **Schedule** icons. One is located outside the blue Sales folders, the other is within the blue folder that houses your shows. Select either one to proceed.



4. You are now able to see every venue and all the shows or events going on in each venue. If you see any shows/events that are grayed-out, they are either not in the folder you are currently viewing or have been disabled.



5. If you need to add a showing to the schedule, select the show from the list above the schedule view and drag it to a time slot and venue.



(Please note that in order for the drag and drop feature to work, you must have a **venue template** set up. For more information on building venue templates, [click here.](#))

6. A **Showing: Properties** window will appear. You can refine your showing information, such as setting that showing on-sale and checking that you are placing it at the right time. **Recurring Every** allows you to copy the same **Show** and **Showing Time** on the days of the week you choose. Make sure to select the last date that this show and time will be copied to.

General

Sales Folder: Movies

Show: Groundhog Day

Template/Venue: Weekday Regular AAH2

Start Date: Wednesday, January 8, 2020 11:00 AM Show time with date

Recurring Every

- Sunday
- Monday
- Tuesday
- Wednesday
- Thursday
- Friday
- Saturday

Through: Wednesday, January 15, 2020

Duration: 1 hours 41 minutes

Show End Date: 1/8/2020 12:41 PM

Exact Date TBD:

Set On Sale:

Add Close

7. Click **Add**. You have now added your showing.

8. You can view the schedule-view by day, week, and timeline by clicking the drop-down on the right side of the screen. You are also able to change the time intervals that are

displayed. If you would like to move from one day to the next, click the arrows on the left side of the screen.

